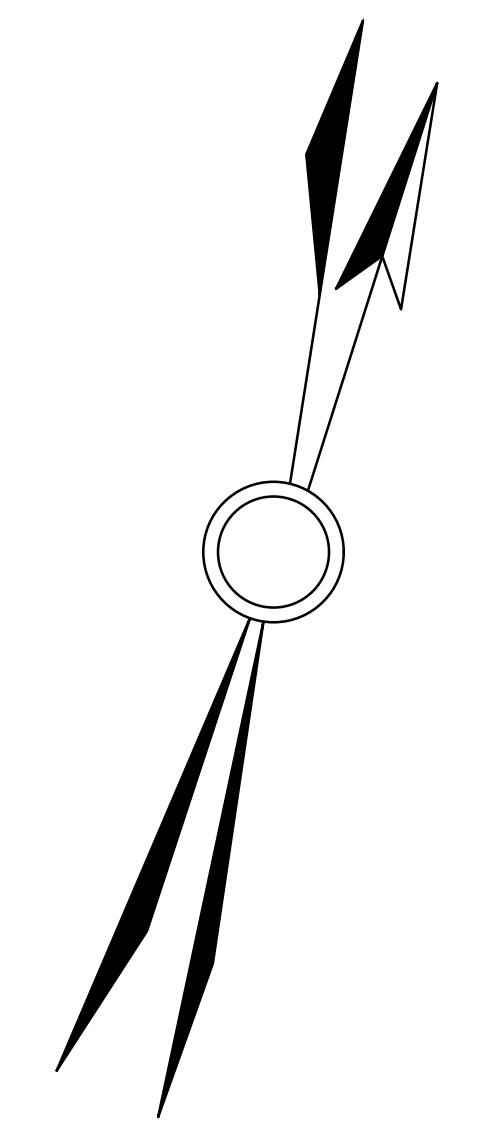
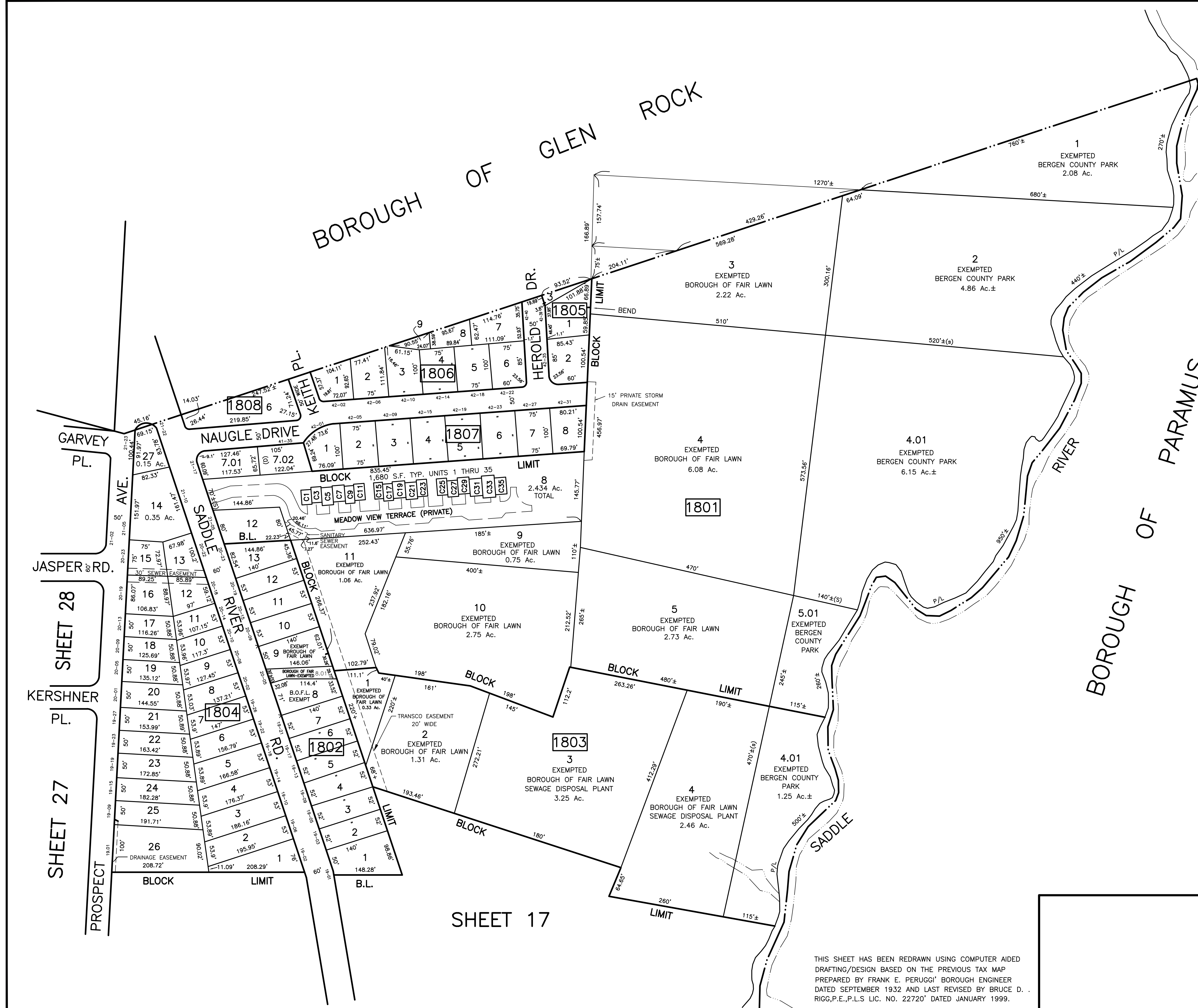


DATE	REVISIONS	NO.
9/20/05	BIRDALL ENGINEERING, INC. WILLIAM SCHINDLER, JR., PLS	GS27188
1/17/06	BIRDALL ENGINEERING, INC. WILLIAM SCHINDLER, JR., PLS	GS27188
1/31/08	BRUCE D. RIGG, P.E., P.L.S.	GB22720
6/1/10	BRUCE D. RIGG, P.E., P.L.S.	GB22720
1/1/14	BRUCE D. RIGG, P.E., P.L.S.	GB22720
12/16/16	BRUCE D. RIGG, P.E., P.L.S.	GB22720
12/2020	GARY A. VEENSTRA, P.L.S.	2450372100



SHEET 28  
SHEET 27

SHEET 17

**TAX MAP**  
 BOROUGH OF FAIR LAWN  
 BERGEN COUNTY NEW JERSEY  
 SCALE: 1"=100' DECEMBER 2004  
 BIRDALL ENGINEERING, INC.  
 611 INDUSTRIAL WAY WEST, EATONTOWN, NEW JERSEY 07724  
 CERTIFICATE OF AUTHORIZATION NO. 24GA27989800  
 WILLIAM SCHINDLER JR., PROFESSIONAL  
 LAND SURVEYOR, LIC. NO. GS27188

THIS SHEET HAS BEEN REDRAWN USING COMPUTER AIDED DRAFTING/DESIGN BASED ON THE PREVIOUS TAX MAP PREPARED BY FRANK E. PERUGGI' BOROUGH ENGINEER DATED SEPTEMBER 1932 AND LAST REVISED BY BRUCE D. RIGG, P.E., P.L.S. LIC. NO. 22720' DATED JANUARY 1999.