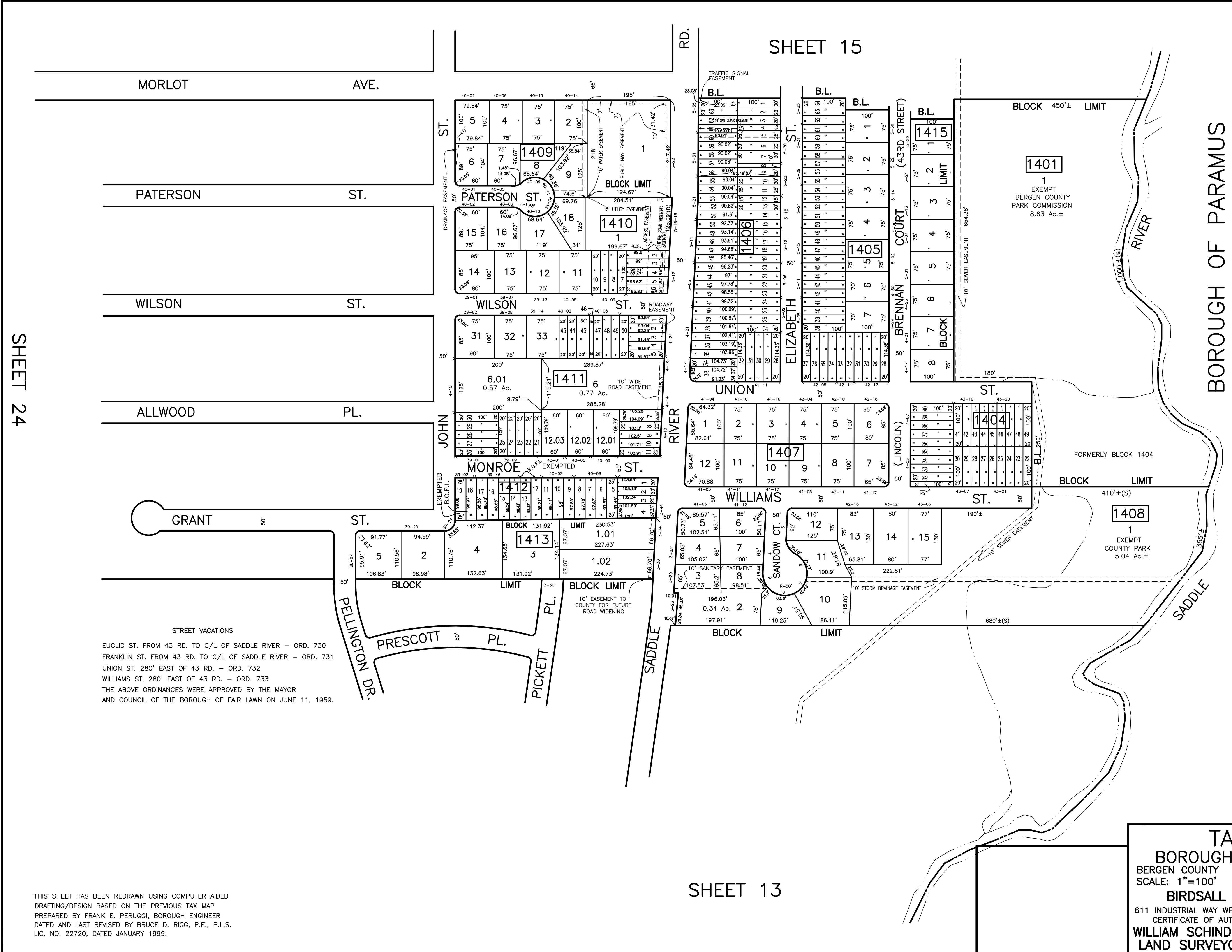


DATE	REVISIONS	NO.
9/20/05	BIRDSELL ENGINEERING, INC. WILLIAM SCHINDLER, JR., PLS	GS27188
1/17/06	BIRDSELL ENGINEERING, INC. WILLIAM SCHINDLER, JR., PLS	GS27188
1/31/08	BRUCE D. RIGG, P.E., P.L.S.	GB22720
6/1/10	BRUCE D. RIGG, P.E., P.L.S.	GB22720
1/1/11	BRUCE D. RIGG, P.E., P.L.S.	GB22720
1/1/14	BRUCE D. RIGG, P.E., P.L.S.	GB22720
12/16/16	BRUCE D. RIGG, P.E., P.L.S.	GB22720
12/2020	GARY A. VEENSTRA, P.L.S.	24650372100



SHEET 24

SHEET 15

SHEET 13

STREET VACATIONS

EUCLID ST. FROM 43 RD. TO C/L OF SADDLE RIVER - ORD. 730
 FRANKLIN ST. FROM 43 RD. TO C/L OF SADDLE RIVER - ORD. 731
 UNION ST. 280' EAST OF 43 RD. - ORD. 732
 WILLIAMS ST. 280' EAST OF 43 RD. - ORD. 733
 THE ABOVE ORDINANCES WERE APPROVED BY THE MAYOR
 AND COUNCIL OF THE BOROUGH OF FAIR LAWN ON JUNE 11, 1959.

TAX MAP
 BOROUGH OF FAIR LAWN
 BERGEN COUNTY NEW JERSEY
 SCALE: 1"=100' DECEMBER 2004
 BIRDSELL ENGINEERING, INC.
 611 INDUSTRIAL WAY WEST, EATONTOWN, NEW JERSEY 07724
 CERTIFICATE OF AUTHORIZATION NO. 24GA27989800
 WILLIAM SCHINDLER JR., PROFESSIONAL
 LAND SURVEYOR, LIC. NO. GS27188