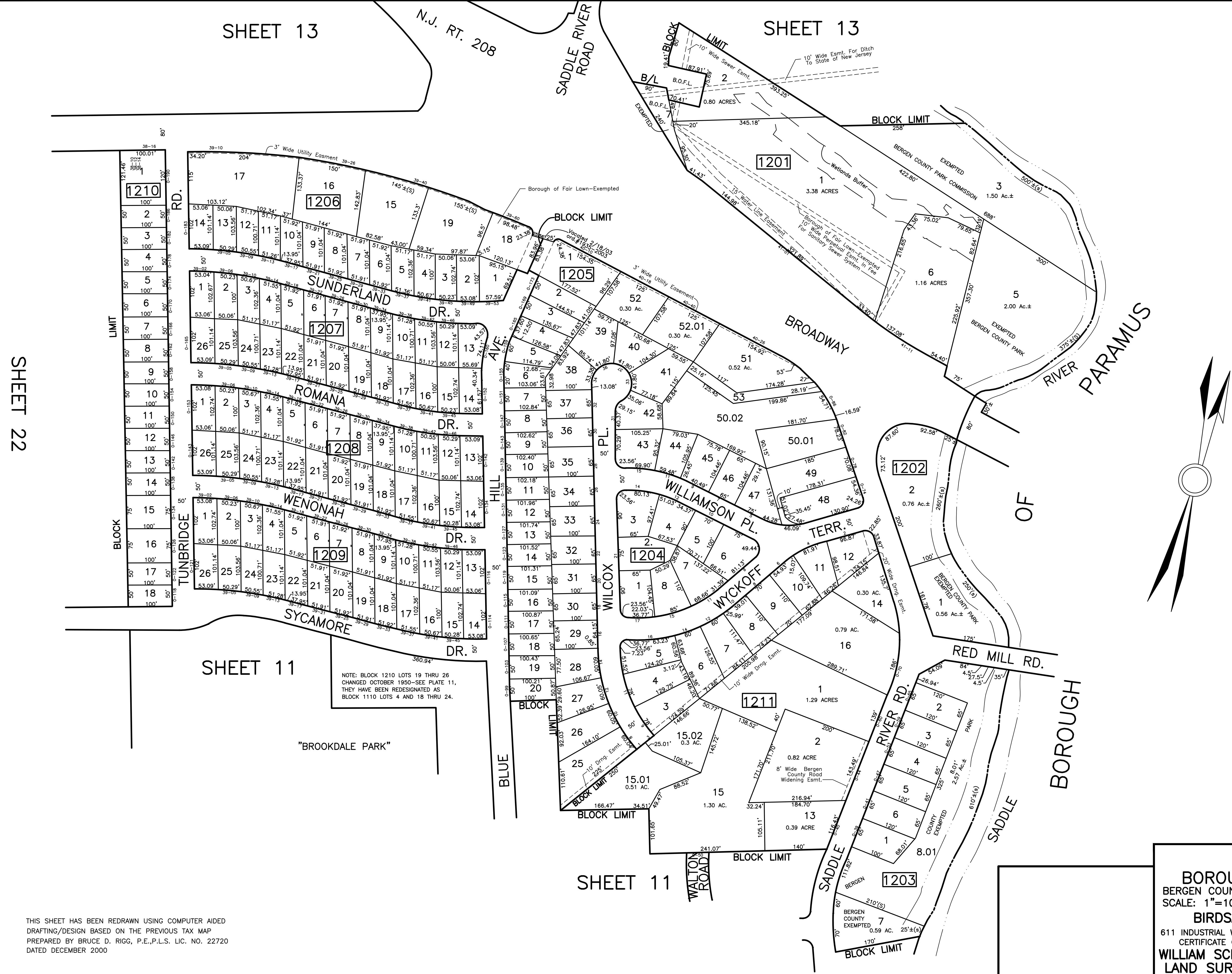


DATE	REVISIONS	NO.
9/20/05	BIRDSELL ENGINEERING, INC. WILLIAM SCHINDLER, JR., P.L.S.	GS27188
1/17/06	BIRDSELL ENGINEERING, INC. WILLIAM SCHINDLER, JR., P.L.S.	GS27188
1/31/08	BRUCE D. RIGG, P.E., P.L.S.	GB22720
6/1/10	BRUCE D. RIGG, P.E., P.L.S.	GB22720
1/1/14	BRUCE D. RIGG, P.E., P.L.S.	GB22720
12/16/16	BRUCE D. RIGG, P.E., P.L.S.	GB22720
12/2020	GARY A. VEENSTRA, P.L.S.	2460372100



SHEET 13

SHEET 13

SHEET 11

SHEET 11

SHEET 22

NOTE: BLOCK 1210 LOTS 19 THRU 26  
CHANGED OCTOBER 1950—SEE PLATE 11,  
THEY HAVE BEEN REDESIGNATED AS  
BLOCK 1110 LOTS 4 AND 18 THRU 24.

"BROOKDALE PARK"

THIS SHEET HAS BEEN REDRAWN USING COMPUTER AIDED  
DRAFTING/DESIGN BASED ON THE PREVIOUS TAX MAP  
PREPARED BY BRUCE D. RIGG, P.E., P.L.S. LIC. NO. 22720  
DATED DECEMBER 2000

**TAX MAP**  
**BOROUGH OF FAIR LAWN**  
 BERGEN COUNTY NEW JERSEY  
 SCALE: 1"=100' DECEMBER 2004  
**BIRDSELL ENGINEERING, INC.**  
 611 INDUSTRIAL WAY WEST, EATONTOWN, NEW JERSEY 07724  
 CERTIFICATE OF AUTHORIZATION NO. 24GA27989800  
**WILLIAM SCHINDLER JR., PROFESSIONAL**  
**LAND SURVEYOR, LIC. NO. GS27188**