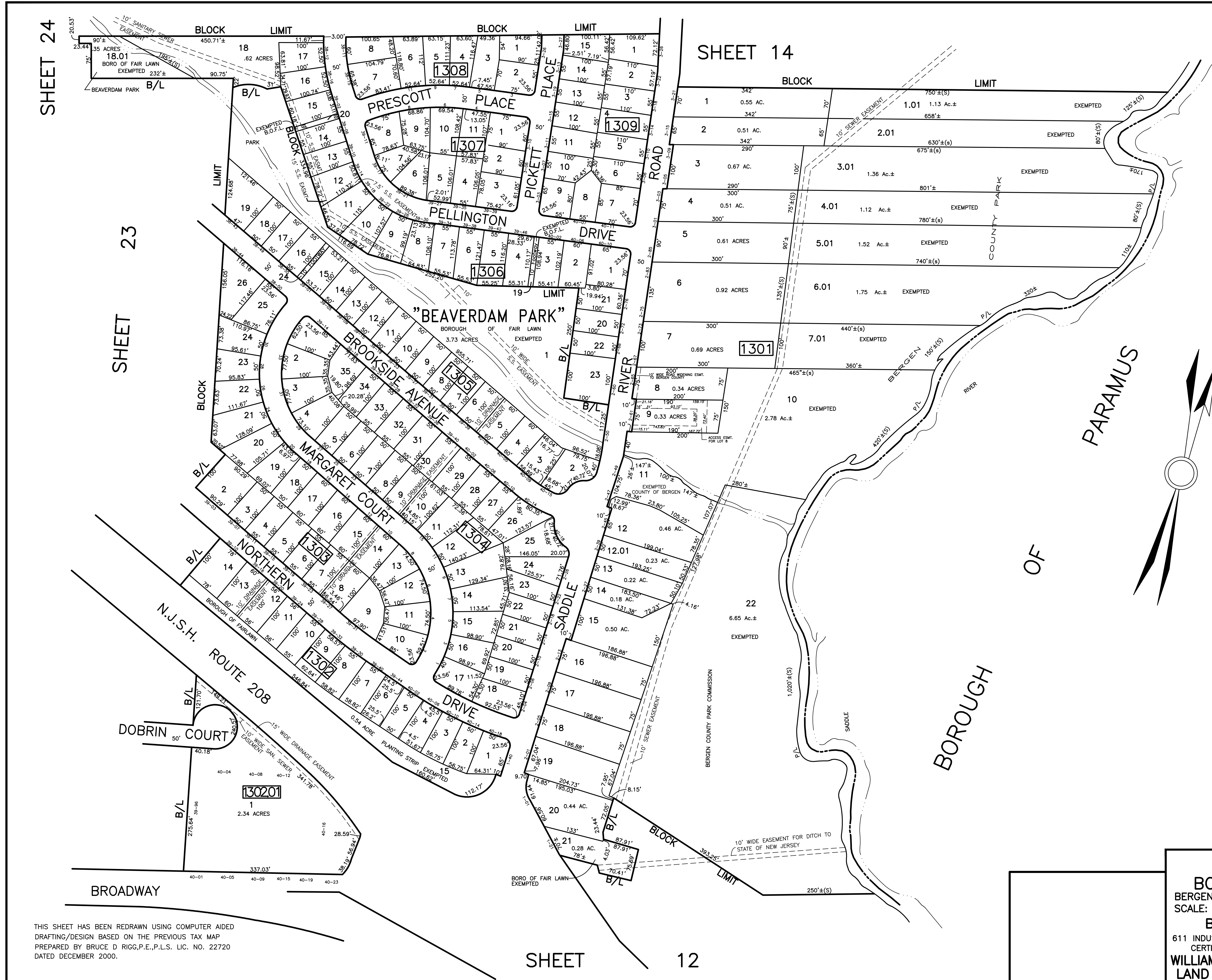


DATE	REVISIONS	NO.
9/20/05	BIRDSALL ENGINEERING, INC. WILLIAM SCHINDLER, JR., PLS	GS27188
1/17/06	BIRDSALL ENGINEERING, INC. WILLIAM SCHINDLER, JR., PLS	GS27188
1/31/08	BRUCE D. RIGG, P.E., P.L.S.	GB22720
6/1/10	BRUCE D. RIGG, P.E., P.L.S.	GB22720
1/1/11	BRUCE D. RIGG, P.E., P.L.S.	GB22720
1/1/14	BRUCE D. RIGG, P.E., P.L.S.	GB22720
12/12/16	BRUCE D. RIGG, P.E., P.L.S.	GB22720
12/2020	GARY A. VEENSTRA, P.L.S.	24GS0721300



THIS SHEET HAS BEEN REDRAWN USING COMPUTER AIDED DRAFTING/DESIGN BASED ON THE PREVIOUS TAX MAP PREPARED BY BRUCE D. RIGG, P.E., P.L.S. LIC. NO. 22720 DATED DECEMBER 2000.

TAX MAP
BOROUGH OF FAIR LAWN
 BERGEN COUNTY NEW JERSEY
 SCALE: 1"=100' DECEMBER 2004
BIRDSALL ENGINEERING, INC.
 611 INDUSTRIAL WAY WEST, EATONTOWN, NEW JERSEY 07724
 CERTIFICATE OF AUTHORIZATION NO. 24GA27989800
WILLIAM SCHINDLER JR., PROFESSIONAL
LAND SURVEYOR, LIC. NO. GS27188