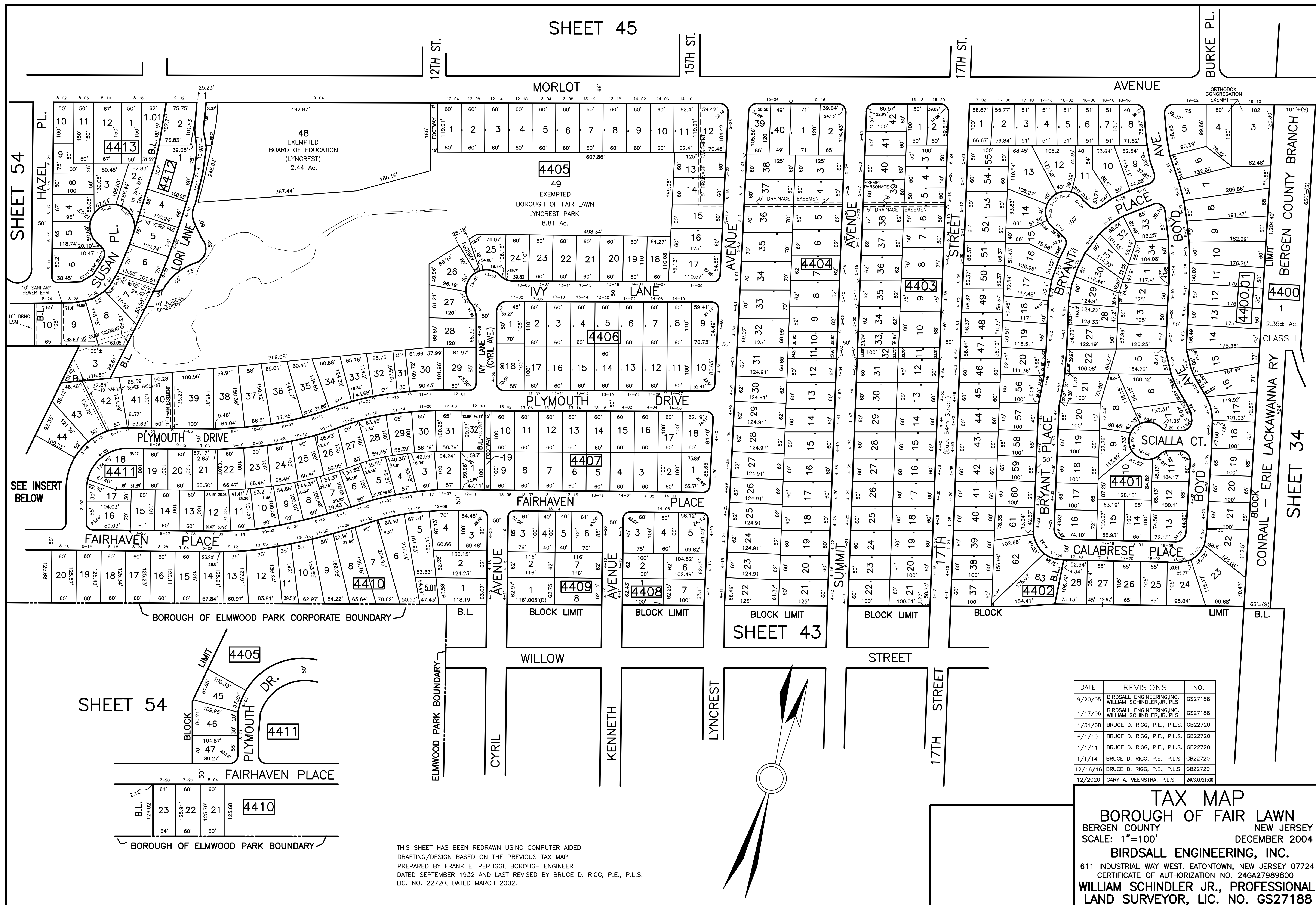


SHEET 45

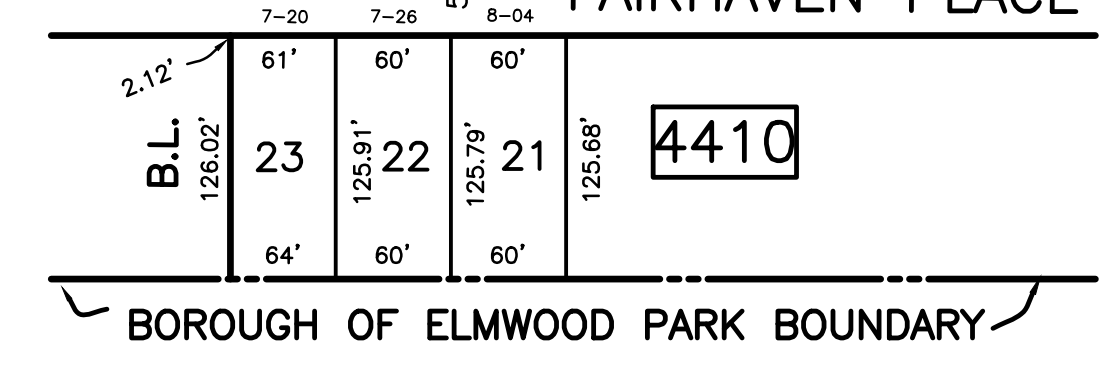


SHEET 54

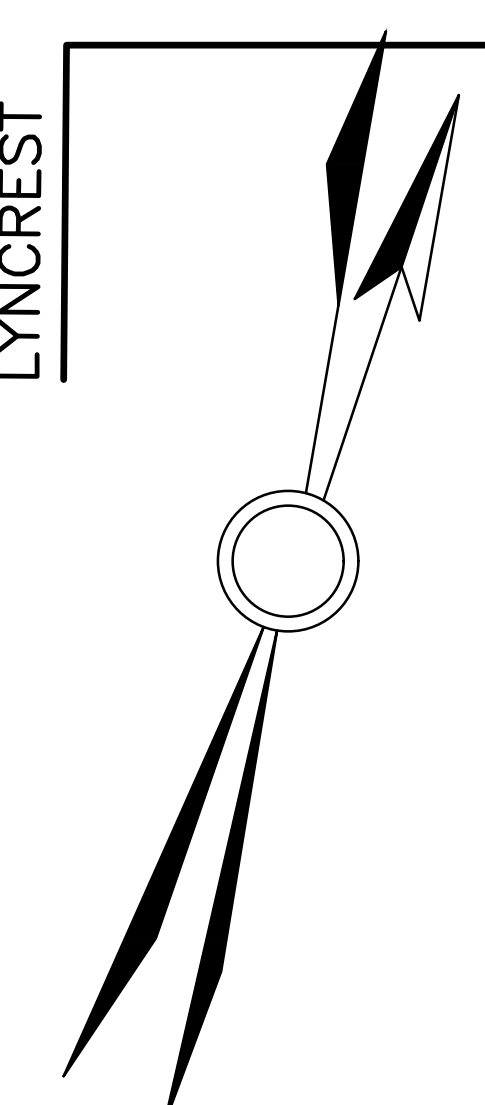
SHEET 34

SEE INSERT BELOW

SHEET 54



THIS SHEET HAS BEEN REDRAWN USING COMPUTER AIDED DRAFTING/DESIGN BASED ON THE PREVIOUS TAX MAP PREPARED BY FRANK E. PERUGGI, BOROUGH ENGINEER DATED SEPTEMBER 1932 AND LAST REVISED BY BRUCE D. RIGG, P.E., P.L.S. LIC. NO. 22720, DATED MARCH 2002.



DATE	REVISIONS	NO.
9/20/05	BIRDSALL ENGINEERING, INC. WILLIAM SCHINDLER, JR., P.L.S.	GS27188
1/17/06	BIRDSALL ENGINEERING, INC. WILLIAM SCHINDLER, JR., P.L.S.	GS27188
1/31/08	BRUCE D. RIGG, P.E., P.L.S.	GB22720
6/1/10	BRUCE D. RIGG, P.E., P.L.S.	GB22720
1/1/11	BRUCE D. RIGG, P.E., P.L.S.	GB22720
1/1/14	BRUCE D. RIGG, P.E., P.L.S.	GB22720
12/16/16	BRUCE D. RIGG, P.E., P.L.S.	GB22720
12/20/20	GARY A. VEENSTRA, P.L.S.	24680372100

**TAX MAP**  
 BOROUGH OF FAIR LAWN  
 BERGEN COUNTY NEW JERSEY  
 SCALE: 1"=100' DECEMBER 2004  
**BIRDSALL ENGINEERING, INC.**  
 611 INDUSTRIAL WAY WEST, EATONTOWN, NEW JERSEY 07724  
 CERTIFICATE OF AUTHORIZATION NO. 24GA27989800  
**WILLIAM SCHINDLER JR., PROFESSIONAL LAND SURVEYOR, LIC. NO. GS27188**