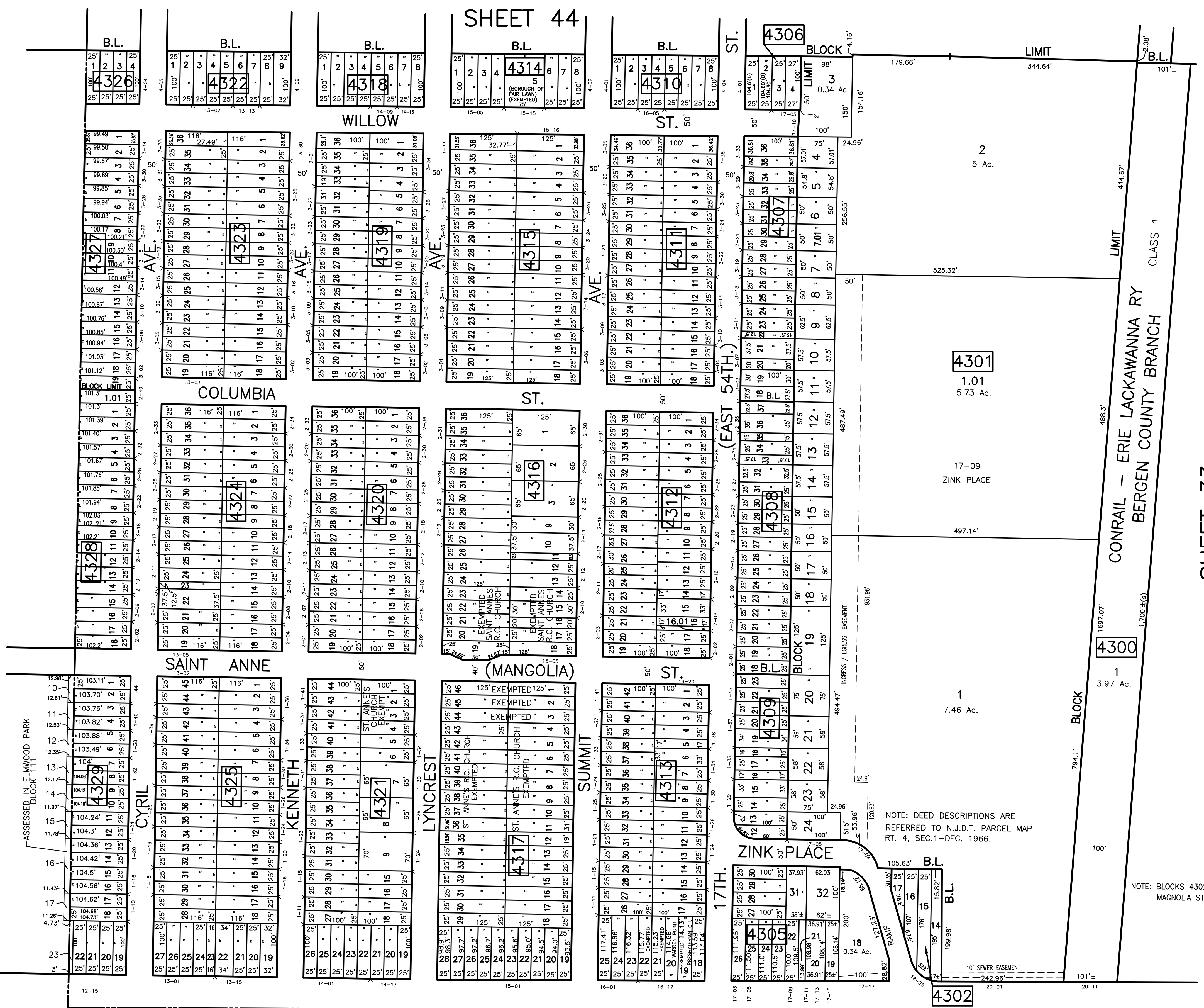


DATE	REVISIONS	NO.
9/20/05	BIRDSALL ENGINEERING, INC. WILLIAM SCHINDLER, JR., PLS	GS27188
1/17/06	BIRDSALL ENGINEERING, INC. WILLIAM SCHINDLER, JR., PLS	GS27188
1/31/08	BRUCE D. RIGG, P.E., P.L.S.	GB22720
6/1/10	BRUCE D. RIGG, P.E., P.L.S.	GB22720
1/1/14	BRUCE D. RIGG, P.E., P.L.S.	GB22720
12/16/16	BRUCE D. RIGG, P.E., P.L.S.	GB22720
12/20/20	GARY A. VEENSTRA, P.L.S.	24GS0321300

BOROUGH OF ELMWOOD PARK

BOROUGH OF ELMWOOD PARK

THIS SHEET HAS BEEN REDRAWN USING COMPUTER AIDED
 DRAFTING/DESIGN BASED ON THE PREVIOUS TAX MAP
 PREPARED BY FRANK E. PERUGGI, BOROUGH ENGINEER
 DATED SEPTEMBER 1932 AND LAST REVISED BY BRUCE D. RIGG, P.E., P.L.S.
 LIC. NO. 22720, DATED MARCH 2002.



SHEET 44

SHEET 33

TAX MAP
BOROUGH OF FAIR LAWN
 BERGEN COUNTY NEW JERSEY
 SCALE: 1"=100' DECEMBER 2004
BIRDSALL ENGINEERING, INC.
 611 INDUSTRIAL WAY WEST, EATONTOWN, NEW JERSEY 07724
 CERTIFICATE OF AUTHORIZATION NO. 24GA27989800
WILLIAM SCHINDLER JR., PROFESSIONAL
LAND SURVEYOR, LIC. NO. GS27188