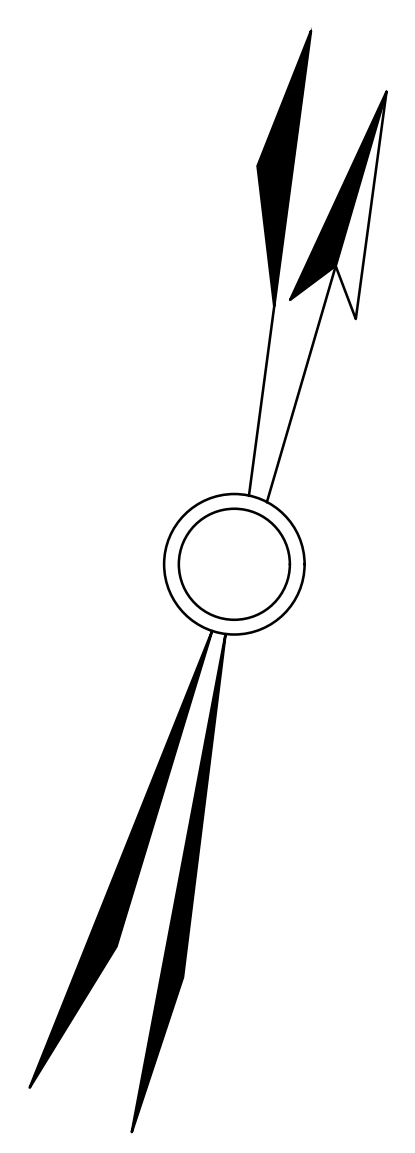
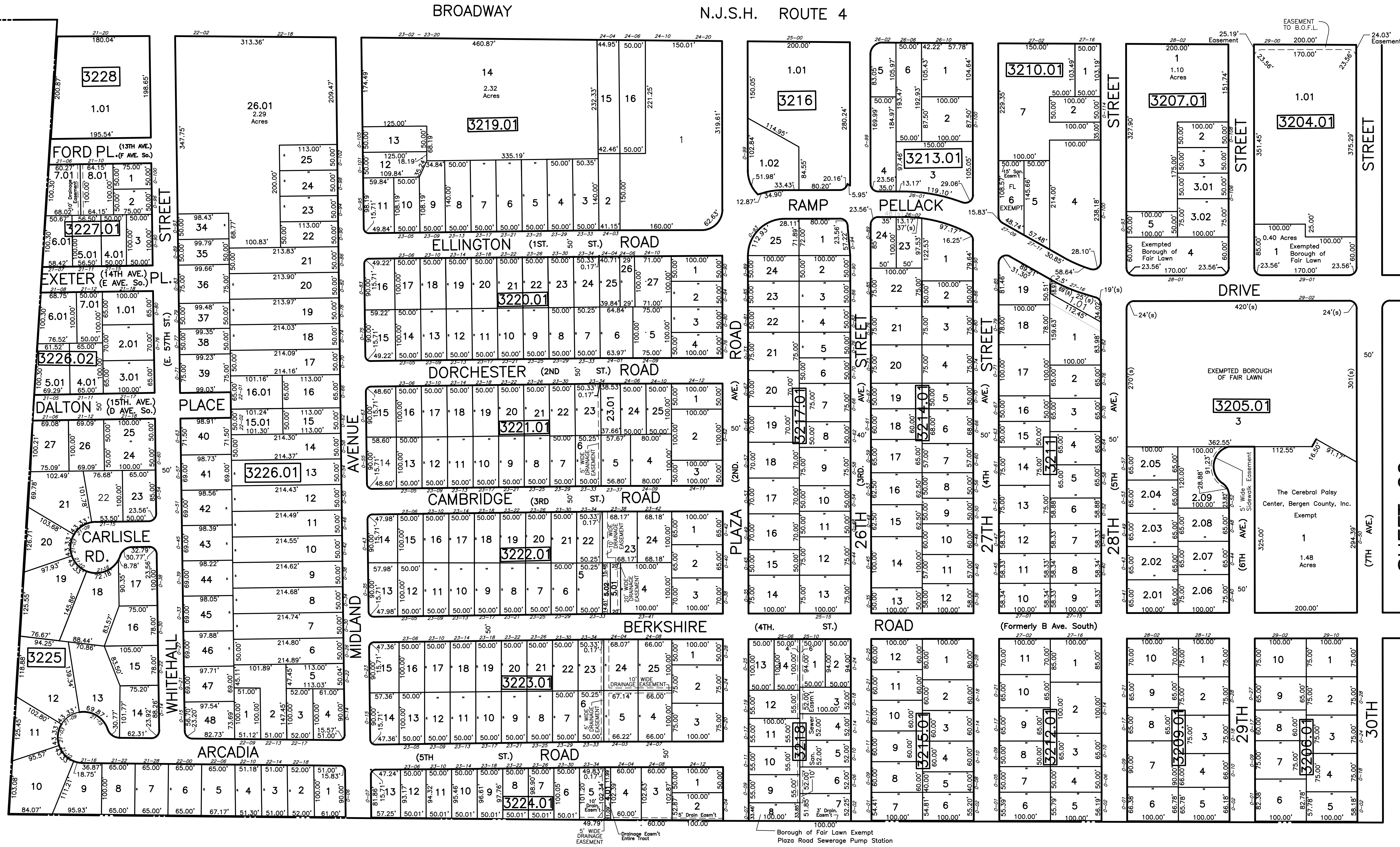


SHEET 33

BOROUGH OF ELMWOOD PARK - BERGEN COUNTY



TOWNSHIP OF SADDLE BROOK - BERGEN COUNTY

THIS SHEET HAS BEEN REDRAWN USING COMPUTER AIDED DRAFTING/DESIGN BASED ON THE PREVIOUS TAX MAP PREPARED BY BRUCE D. RIGG, PE, P.L.S. LIC.NO. 22720, DATED JANUARY 1996 LAST REVISED MAY 2002

DATE	REVISIONS	NO.
9/20/05	BIRDSALL ENGINEERING, INC. WILLIAM SCHINDLER, JR., P.L.S.	GS27188
1/17/06	BIRDSALL ENGINEERING, INC. WILLIAM SCHINDLER, JR., P.L.S.	GS27188
1/31/08	BRUCE D. RIGG, P.E., P.L.S.	GB22720
6/1/10	BRUCE D. RIGG, P.E., P.L.S.	GB22720
1/1/14	BRUCE D. RIGG, P.E., P.L.S.	GB22720
12/16/16	BRUCE D. RIGG, P.E., P.L.S.	GB22720
12/20/20	GARY A. VEENSTRA, P.L.S.	24CS03721300

TAX MAP
BOROUGH OF FAIR LAWN
 BERGEN COUNTY NEW JERSEY
 SCALE: 1"=100' DECEMBER 2004
BIRDSALL ENGINEERING, INC.
 611 INDUSTRIAL WAY WEST, EATONTOWN, NEW JERSEY 07724
 CERTIFICATE OF AUTHORIZATION NO. 24GA27989800
WILLIAM SCHINDLER JR., PROFESSIONAL LAND SURVEYOR, LIC. NO. GS27188