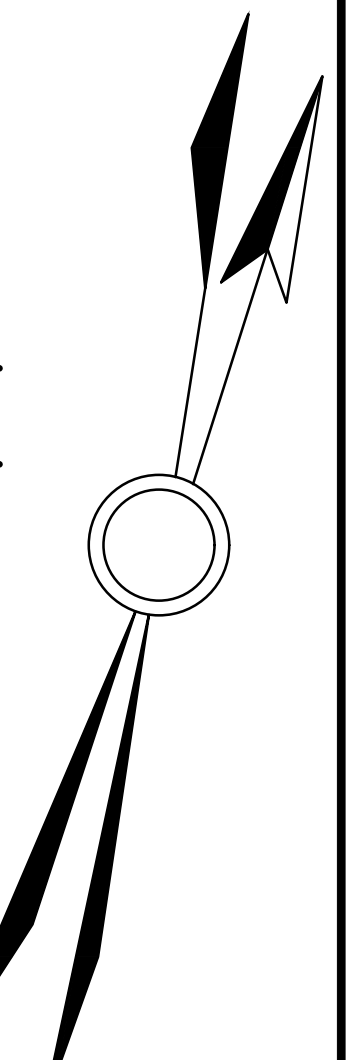
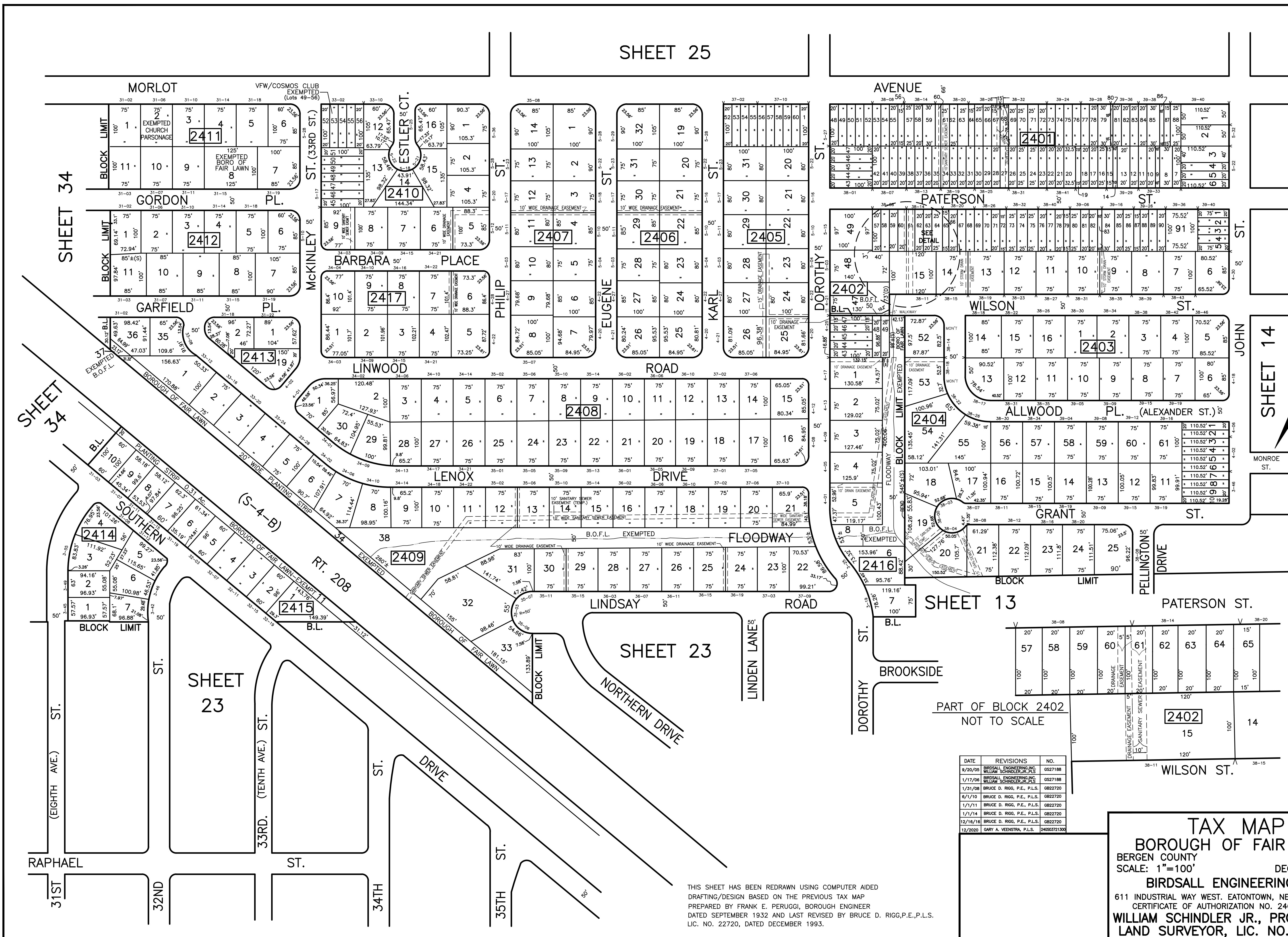


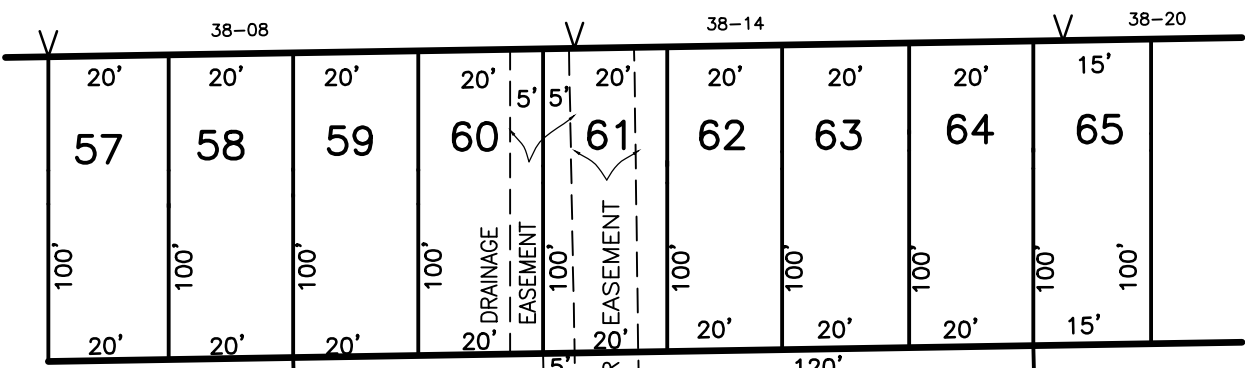
SHEET 25



DATE	REVISIONS	NO.
8/20/05	BIRDSALL ENGINEERING, INC. WILLIAM SCHINDLER, JR., P.L.S.	GS27188
1/17/06	BIRDSALL ENGINEERING, INC. WILLIAM SCHINDLER, JR., P.L.S.	GS27188
1/31/08	BRUCE D. RIGG, P.E., P.L.S.	GB22720
6/1/10	BRUCE D. RIGG, P.E., P.L.S.	GB22720
1/1/11	BRUCE D. RIGG, P.E., P.L.S.	GB22720
1/1/14	BRUCE D. RIGG, P.E., P.L.S.	GB22720
12/16/16	BRUCE D. RIGG, P.E., P.L.S.	GB22720
12/2020	GARY A. VEENSTRA, P.L.S.	246203721300

**TAX MAP**  
**BOROUGH OF FAIR LAWN**  
 BERGEN COUNTY NEW JERSEY  
 SCALE: 1"=100' DECEMBER 2004  
**BIRDSALL ENGINEERING, INC.**  
 611 INDUSTRIAL WAY WEST, EATONTOWN, NEW JERSEY 07724  
 CERTIFICATE OF AUTHORIZATION NO. 24GA27989800  
**WILLIAM SCHINDLER JR., PROFESSIONAL**  
**LAND SURVEYOR, LIC. NO. GS27188**

THIS SHEET HAS BEEN REDRAWN USING COMPUTER AIDED DRAFTING/DESIGN BASED ON THE PREVIOUS TAX MAP PREPARED BY FRANK E. PERUGGI, BOROUGH ENGINEER DATED SEPTEMBER 1932 AND LAST REVISED BY BRUCE D. RIGG, P.E., P.L.S. LIC. NO. 22720, DATED DECEMBER 1993.



PART OF BLOCK 2402  
 NOT TO SCALE

SHEET 34

SHEET 34

SHEET 14

SHEET 23

SHEET 13