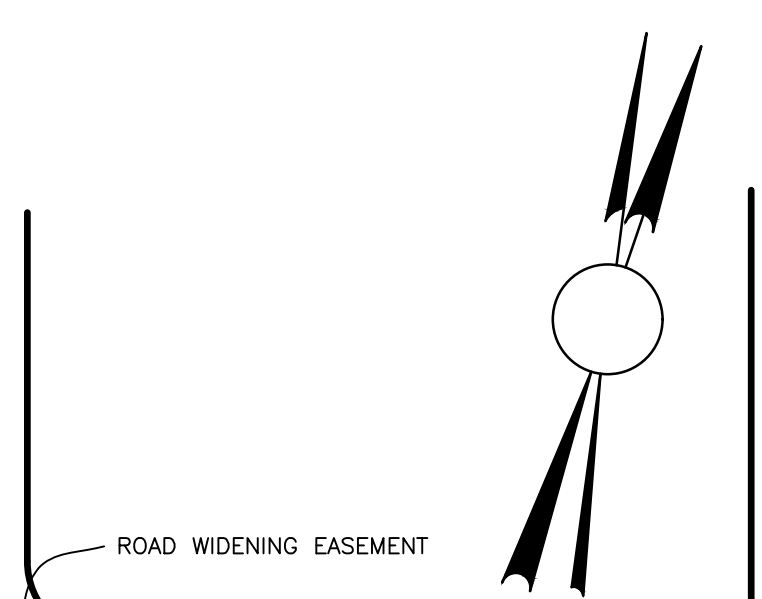
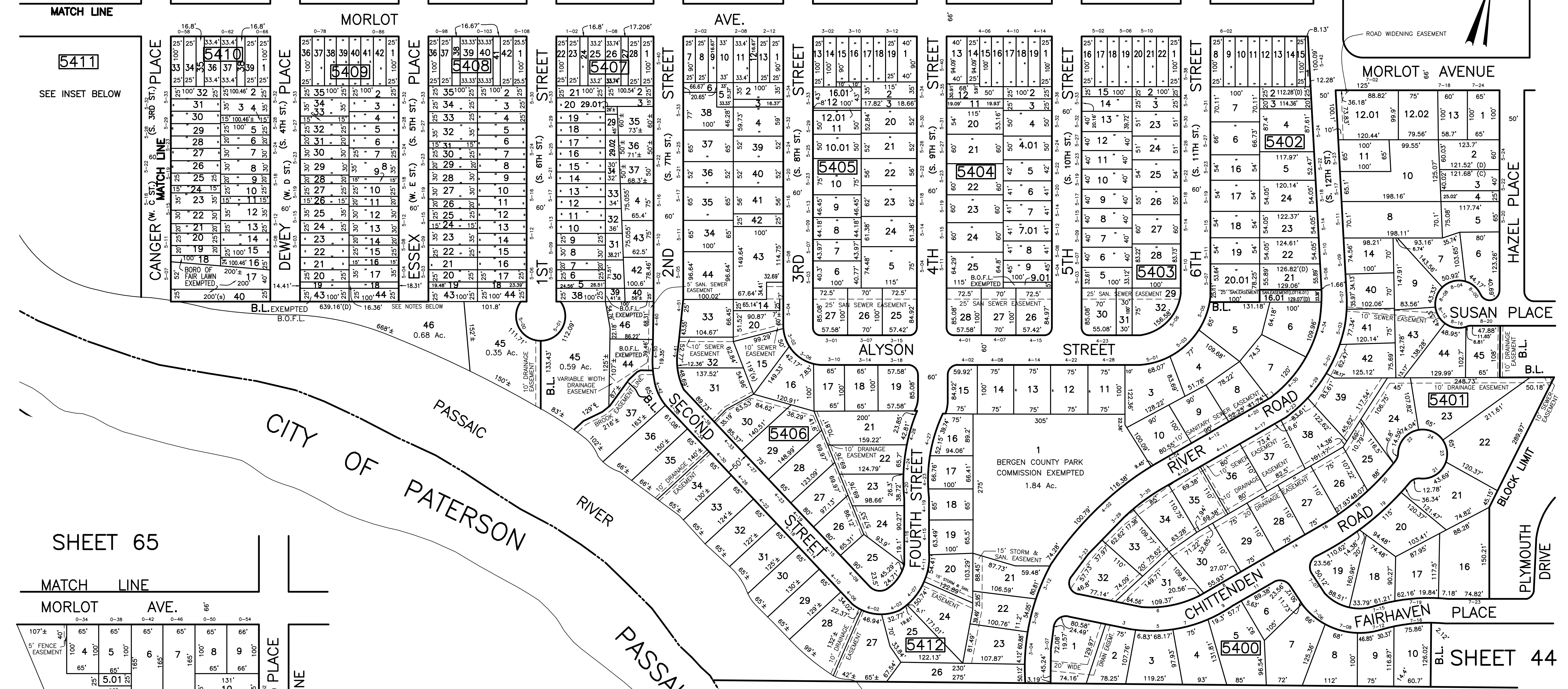


SHEET 65

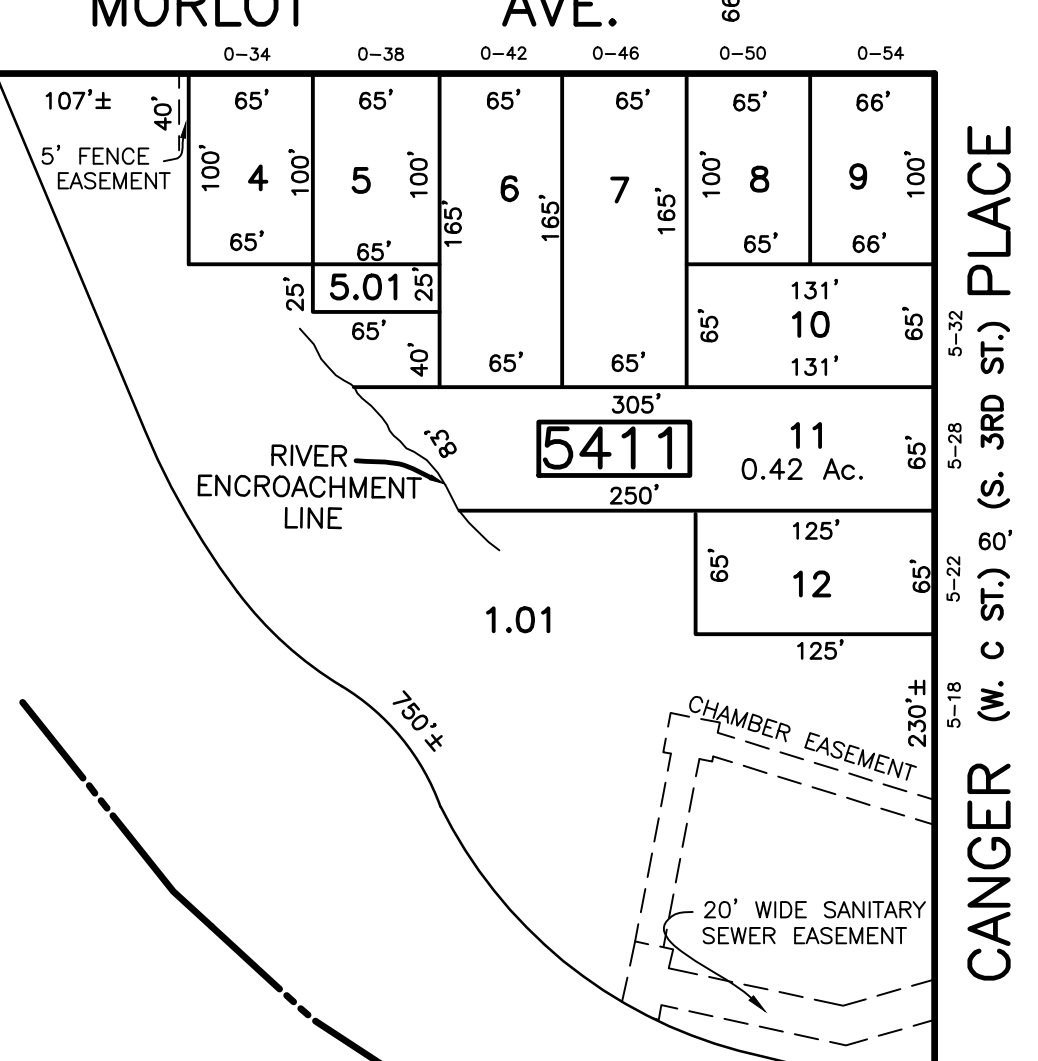
SHEET 55



5411  
SEE INSET BELOW

SHEET 65

MORLOT AVE.



SEE INSET  
SCALE 1"=100'

FOLLOWING LOTS ARE 25' SANITARY SEWER EASEMENTS

- BLOCK 5410, LOT 40
- BLOCK 5409, LOTS 43 & 44
- BLOCK 5408, LOTS 40 & 44
- BLOCK 5407, LOTS 38,39,40
- BLOCK 5406, LOT 14
- BLOCK 5403, LOT 29
- BLOCK 5402, LOT 16.01 & 20.01

NOTE:  
FOURTH STREET SOUTH OF MORLOT AVE.  
(FORMERLY S9 TH ST.) VACATED IN EXCESS  
OF 60' R/W BY ORDINANCE 305 PASSED  
MARCH 12, 1946 AND ORDINANCE 242A  
PASSED JAN. 28, 1941, BOTH FILED IN  
BERGEN COUNTY CLERK'S OFFICE.

THIS SHEET HAS BEEN REDRAWN USING COMPUTER AIDED  
DRAFTING/DESIGN BASED ON THE PREVIOUS TAX MAP  
PREPARED BY BRUCE D. RIGG, P.E., L.S. LIC. NO. 22720  
DATED DECEMBER 2000 AND LAST REVISED MARCH 8, 2002

BOROUGH OF ELMWOOD PARK

DATE	REVISIONS	NO.
9/20/05	BIRDSALL ENGINEERING, INC. WILLIAM SCHINDLER, JR., PLS	GS27188
1/17/06	BIRDSALL ENGINEERING, INC. WILLIAM SCHINDLER, JR., PLS	GS27188
1/31/08	BRUCE D. RIGG, P.E., P.L.S.	GB22720
6/1/10	BRUCE D. RIGG, P.E., P.L.S.	GB22720
1/1/14	BRUCE D. RIGG, P.E., P.L.S.	GB22720
12/16/16	BRUCE D. RIGG, P.E., P.L.S.	GB22720
12/20/20	GARY A. VEENSTRA, P.L.S.	24GS0721300

**TAX MAP**  
BOROUGH OF FAIR LAWN  
BERGEN COUNTY  
NEW JERSEY  
SCALE: 1"=100'  
DECEMBER 2004  
**BIRDSALL ENGINEERING, INC.**  
611 INDUSTRIAL WAY WEST, EATONTOWN, NEW JERSEY 07724  
CERTIFICATE OF AUTHORIZATION NO. 24CA27989800  
**WILLIAM SCHINDLER JR., PROFESSIONAL  
LAND SURVEYOR, LIC. NO. GS27188**