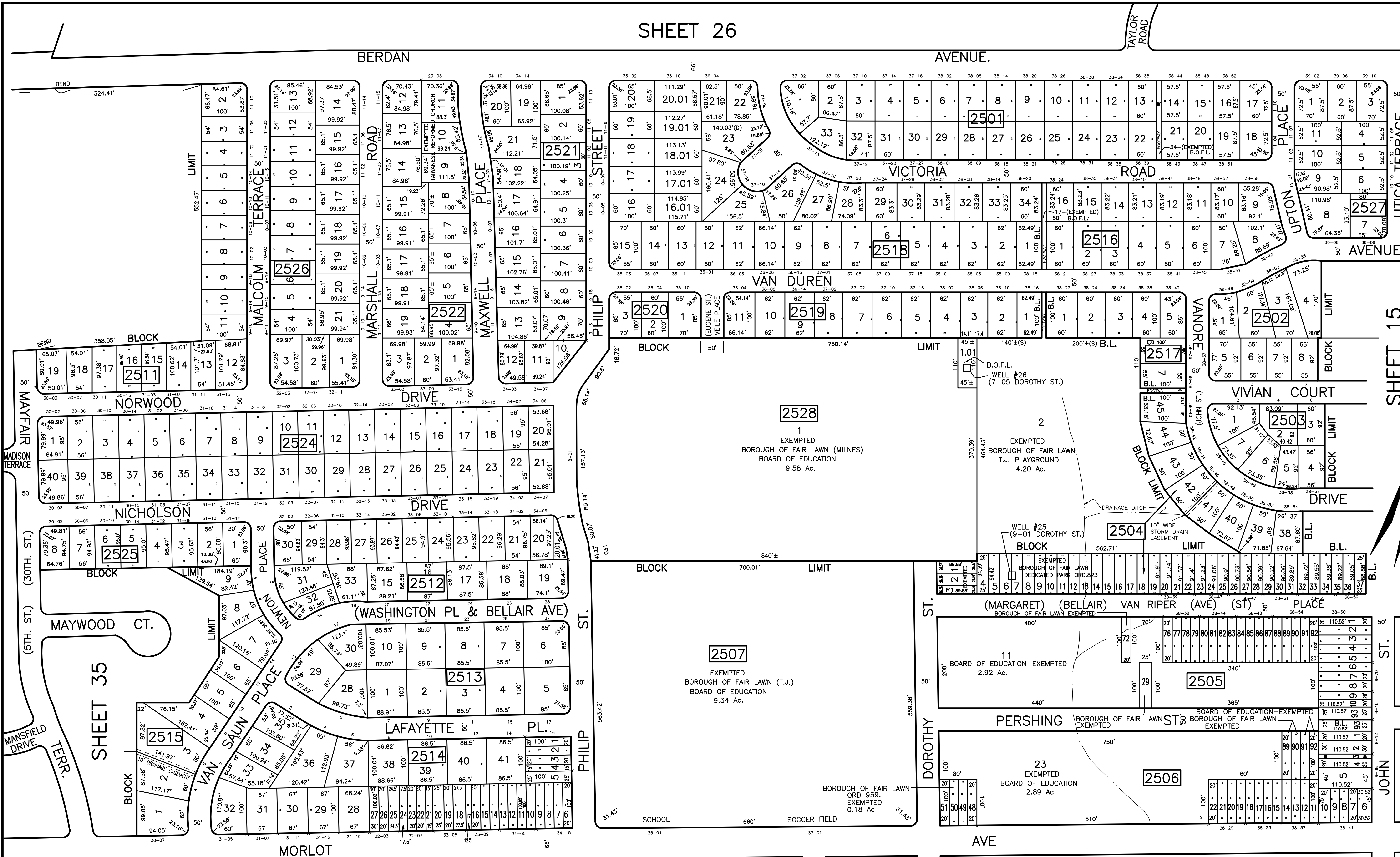


SHEET 26



SHEET 15

JOHN ST.

THIS SHEET HAS BEEN REDRAWN USING COMPUTER AIDED DRAFTING/DESIGN BASED ON THE PREVIOUS TAX MAP PREPARED BY FRANK E. PERUGGI, BOROUGH ENGINEER DATED SEPTEMBER 1932 AND LAST REVISED BY BRUCE D. RIGG, P.E., P.L.S. LIC. NO. 22720, DATED MARCH 2002.

NOTE:  
BLOCKS 2513/2514—LOTS 31/47 38/54 WERE FORMERLY LOTS 28/44; BLOCK 2523 WAS ELIMINATED, THESE CHANGES MADE 10/50.

SHEET 24

DUE TO THE VACATION OF A PORTION OF PERSHING ST. BY ORD. #662, DEC. 1956 THE FOLLOWING LOTS WERE CREATED: BLK 2505, LOT 93 BLK. 2506, LOT 93

DATE	REVISIONS	NO.
9/20/05	BIRDSALL ENGINEERING, INC. WILLIAM SCHINDLER, JR., P.L.S.	GS27188
1/17/06	BIRDSALL ENGINEERING, INC. WILLIAM SCHINDLER, JR., P.L.S.	GS27188
1/31/08	BRUCE D. RIGG, P.E., P.L.S.	GB22720
6/1/10	BRUCE D. RIGG, P.E., P.L.S.	GB22720
1/1/14	BRUCE D. RIGG, P.E., P.L.S.	GB22720
12/16/16	BRUCE D. RIGG, P.E., P.L.S.	GB22720
12/20/20	GARY A. VEENSTRA, P.L.S.	24630371300

**TAX MAP**  
BOROUGH OF FAIR LAWN  
BERGEN COUNTY  
NEW JERSEY  
SCALE: 1"=100'  
DECEMBER 2004  
**BIRDSALL ENGINEERING, INC.**  
611 INDUSTRIAL WAY WEST, EATONTOWN, NEW JERSEY 07724  
CERTIFICATE OF AUTHORIZATION NO. 24GA27989800  
**WILLIAM SCHINDLER JR., PROFESSIONAL LAND SURVEYOR, LIC. NO. GS27188**