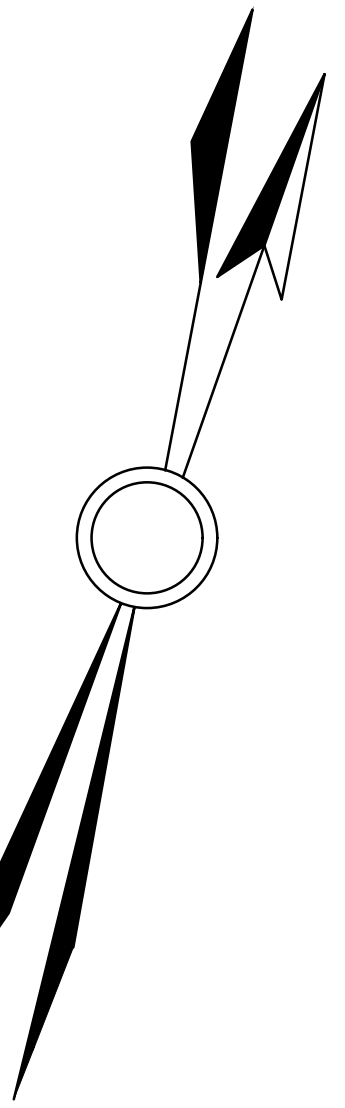


THIS SHEET HAS BEEN REDRAWN USING COMPUTER AIDED DRAFTING/DESIGN BASED ON THE PREVIOUS TAX MAP PREPARED BY FRANK E. PERUGGI, BOROUGH ENGINEER DATED SEPTEMBER 1932 AND LAST REVISED BY BRUCE D. RIGG, P.E., P.L.S. LIC. NO. 22720, DATED DECEMBER 1993.

SHEET 47



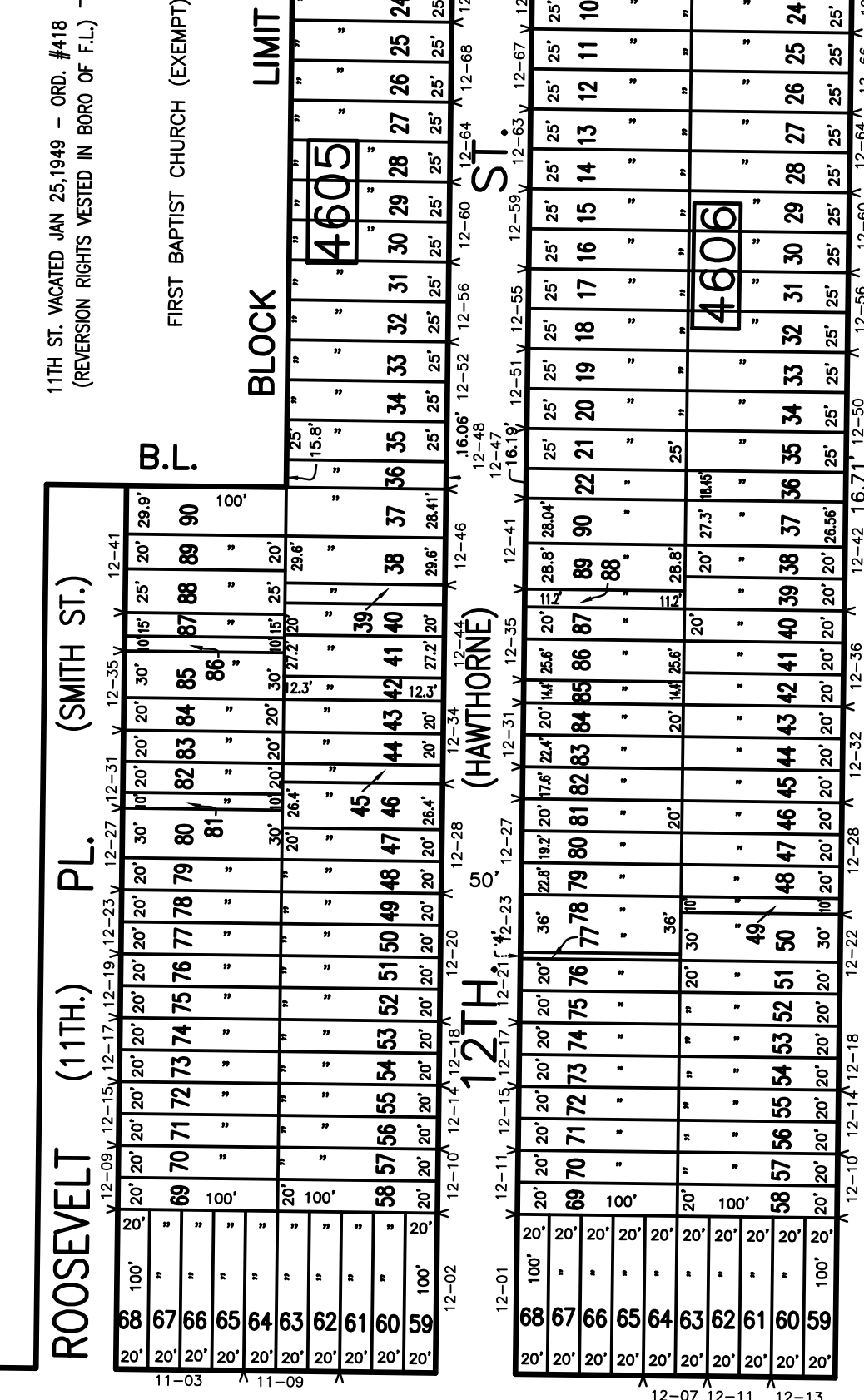
DATE	REVISIONS	NO.
9/20/05	BIRDSALL ENGINEERING, INC. WILLIAM SCHINDLER, JR., P.L.S.	GS27188
1/17/06	BIRDSALL ENGINEERING, INC. WILLIAM SCHINDLER, JR., P.L.S.	GS27188
1/31/08	BRUCE D. RIGG, P.E., P.L.S.	GB22720
6/1/10	BRUCE D. RIGG, P.E., P.L.S.	GB22720
1/1/11	BRUCE D. RIGG, P.E., P.L.S.	GB22720
1/1/14	BRUCE D. RIGG, P.E., P.L.S.	GB22720
12/16/16	BRUCE D. RIGG, P.E., P.L.S.	GB22720
12/20/20	GARY A. VEENSTRA, P.L.S.	24650372100

TAX MAP
BOROUGH OF FAIR LAWN
 BERGEN COUNTY
 SCALE: 1"=100'

BIRDSALL ENGINEERING, INC.
 NEW JERSEY
 DECEMBER 2004

611 INDUSTRIAL WAY WEST, EATONTOWN, NEW JERSEY 07724
 CERTIFICATE OF AUTHORIZATION NO. 24642798900
WILLIAM SCHINDLER, JR., PROFESSIONAL LAND SURVEYOR, LIC. NO. GS27188

SHEET 56



BERDAN

STREET VACATION
 ROSE PL. FROM BURBANK TO LEXINGTON, ORD. No. 729
 THE ABOVE ORDINANCE WAS APPROVED BY THE MAYOR AND COUNCIL OF THE BORO OF FAIR LAWN, JUNE 4 1959.

SHEET 45

FAIRCLOUGH PLACE
 CADMUS PLACE

SHEET 36

CONRAIL - ERIE LACKAWANNA RY
 BERGEN COUNTY BRANCH
 LIMIT

4600
 1
 4.13 Ac.

NOTE: DEED DESCRIPTIONS ARE REFERRED TO N.J.D.T. GENERAL PROPERTY MAP SEC. 3, JUNE 1959

NOTE: DEED DESCRIPTIONS ARE REFERRED TO N.J.D.T. PARCEL MAP RT. 4 SEC. 1 DEC. 1966.